

GREEN CAY II

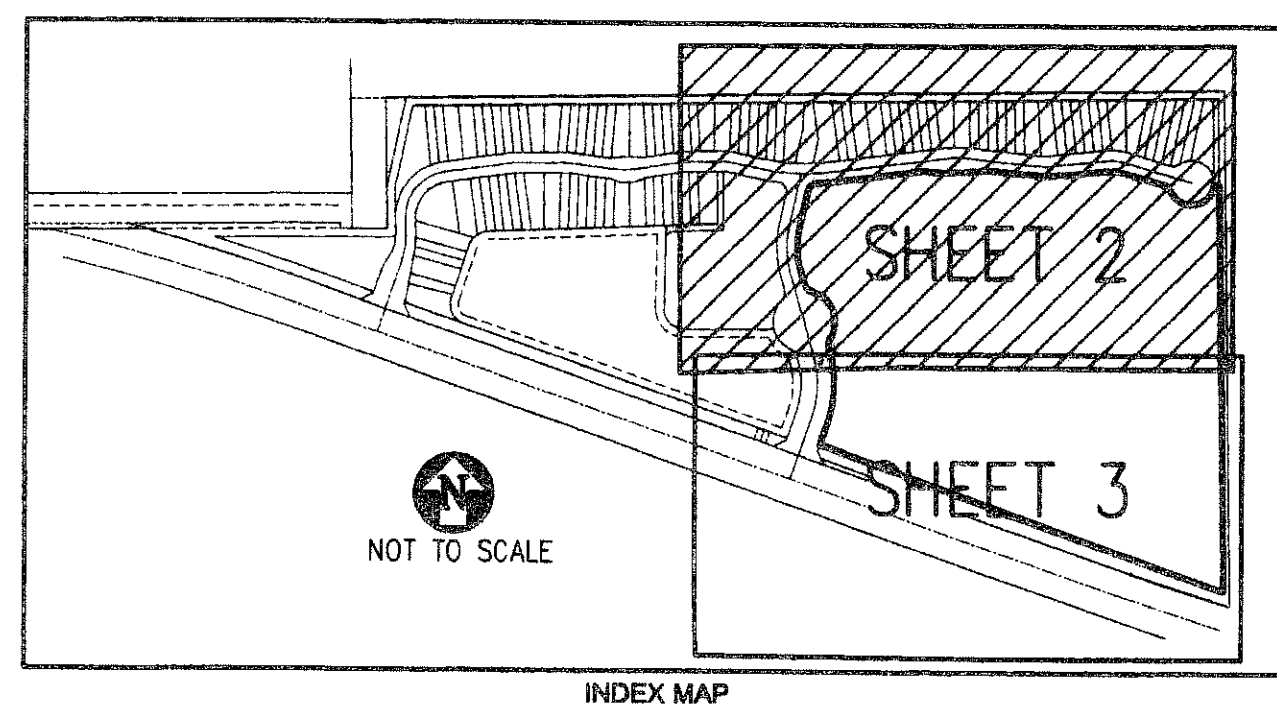
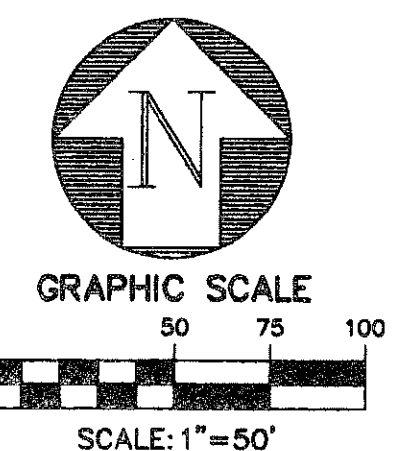
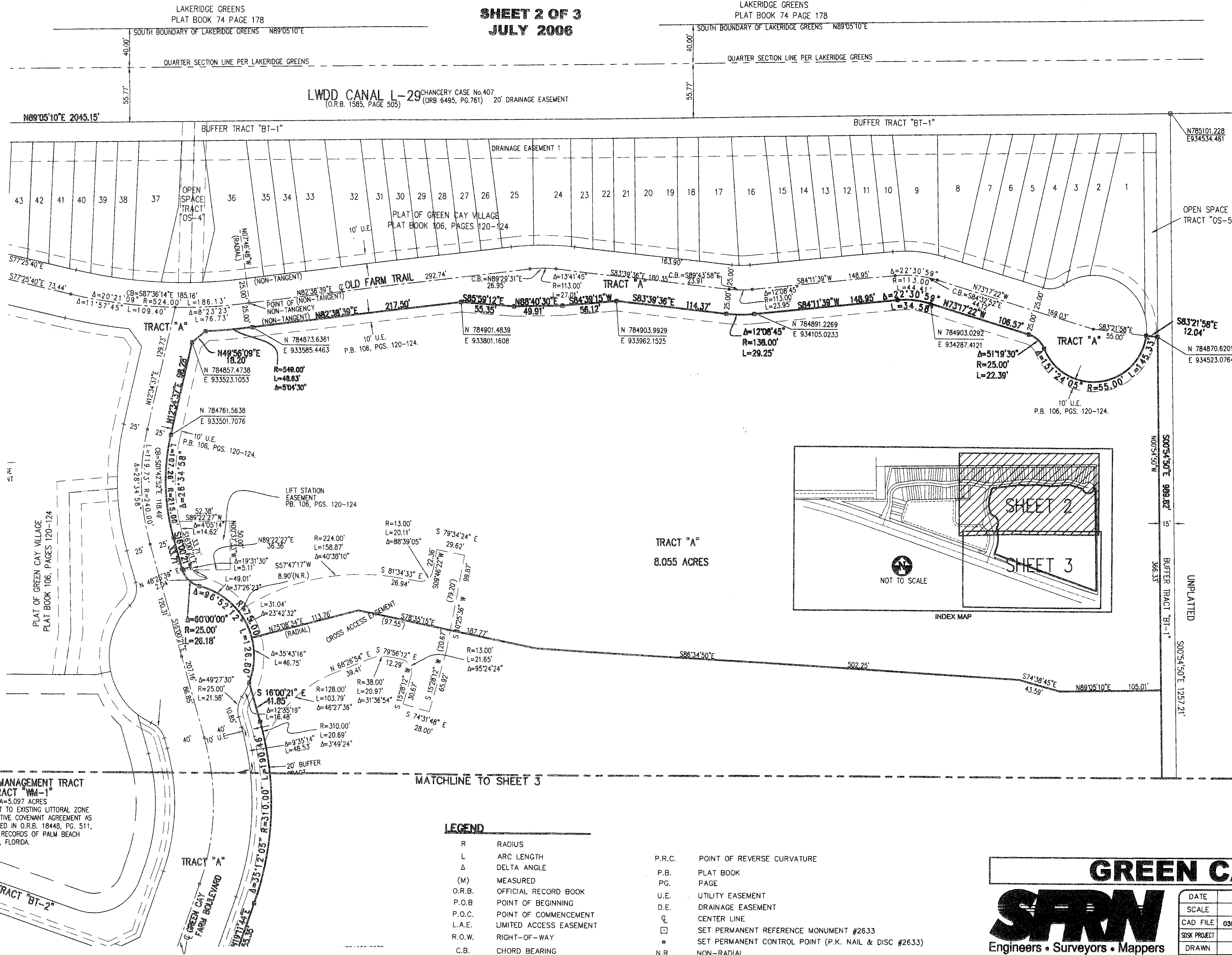
BEING A REPLAT OF THE RESIDENTIAL TRACT OF GREEN CAY VILLAGE AS RECORDED IN PLAT BOOK 106, PAGES 120 THROUGH 124, OF THE PUBLIC RECORDS OF PALM BEACH COUNTY AND LYING IN SECTIONS 3, TOWNSHIP 46 SOUTH, RANGE 42 EAST, WINSBERG FARMS P.U.D., PALM BEACH COUNTY, FLORIDA.

22

LAKERIDGE GREENS
PLAT BOOK 74 PAGE 178

SHEET 2 OF 3
JULY 2006

LAKERIDGE GREENS
PLAT BOOK 74 PAGE 178



WATER MANAGEMENT TRACT
TRACT "WM-1"
AREA=5.097 ACRES
SUBJECT TO EXISTING LITORAL ZONE
RESTRICTIVE COVENANT AGREEMENT AS
RECORDED IN O.R.B. 18448, PG. 511,
PUBLIC RECORDS OF PALM BEACH
COUNTY, FLORIDA.

LEGEND

- | | | | |
|--------|-------------------------|--------|--|
| R | RADIUS | P.R.C. | POINT OF REVERSE CURVATURE |
| L | ARC LENGTH | P.B. | PLAT BOOK |
| Δ | DELTA ANGLE | PG. | PAGE |
| (M) | MEASURED | U.E. | UTILITY EASEMENT |
| O.R.B. | OFFICIAL RECORD BOOK | D.E. | DRAINAGE EASEMENT |
| P.O.B. | POINT OF BEGINNING | CL | CENTER LINE |
| P.O.C. | POINT OF COMMENCEMENT | □ | SET PERMANENT REFERENCE MONUMENT #2633 |
| L.A.E. | LIMITED ACCESS EASEMENT | ● | SET PERMANENT CONTROL POINT (P.K. NAIL & DISC #2633) |
| R.O.W. | RIGHT-OF-WAY | ○ | NON-RADIAL |
| C.B. | CHORD BEARING | | |

GREEN CAY II

Engineers • Surveyors • Mappers

1201 BELVEDERE ROAD, WEST PALM BEACH, FLORIDA 33405
PH (561)855-1151 • FAX (561)832-9390 • WWW.SFRNINC.COM

DATE	02/24/2006
SCALE	1"=50'
CAD FILE	03504CONDOPLAT.dwg
SISK PROJECT	03504
DRAWN	SFRN STAFF
CHECKED	G. RAYMAN

S
H
E
E
T

2/3

JOB NO.
03504.05

SUPERVISOR GREEN CAY II REPLAT
 BOOK 106
 PLAT 106, PAGES 120-124
 WINSBERG FARMS P.U.D.
 TOWNSHIP 46 SOUTH
 RANGE 42 EAST
 PALM BEACH COUNTY, FLORIDA
 DATE 06/14/06
 PLO 08432

C:\Land Projects\RE\03504\m\03504.condo.plat.dwg 7/26/2006 8:07:16 AM EST